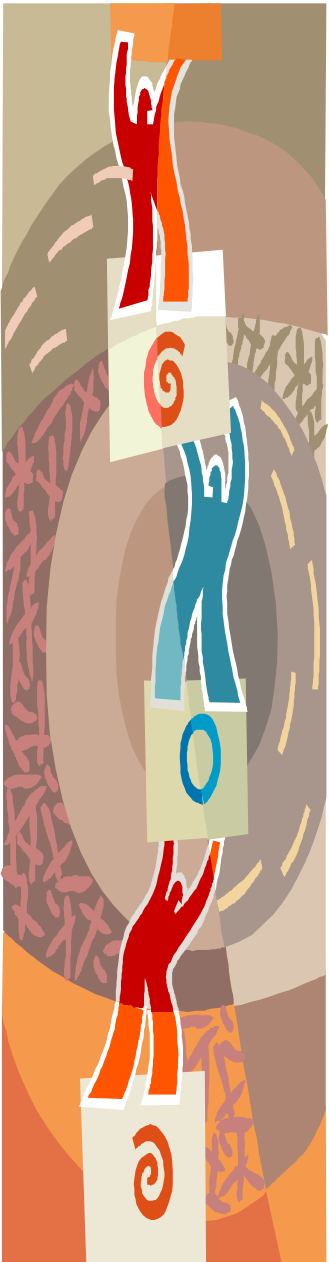
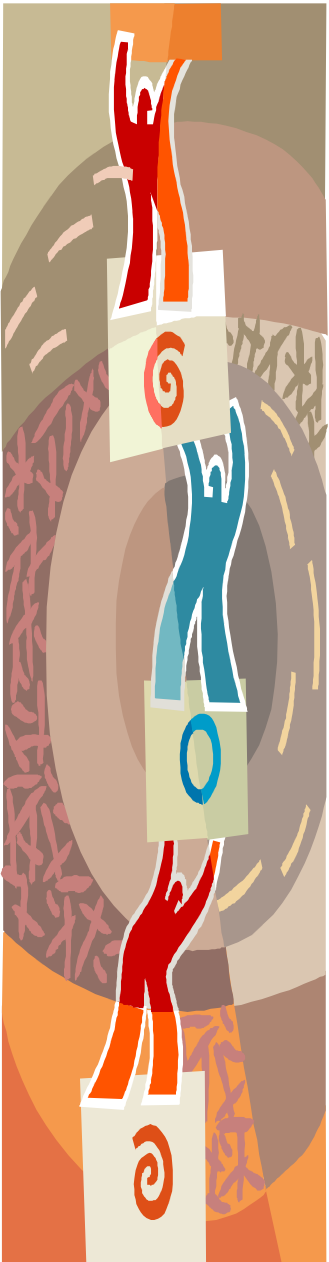
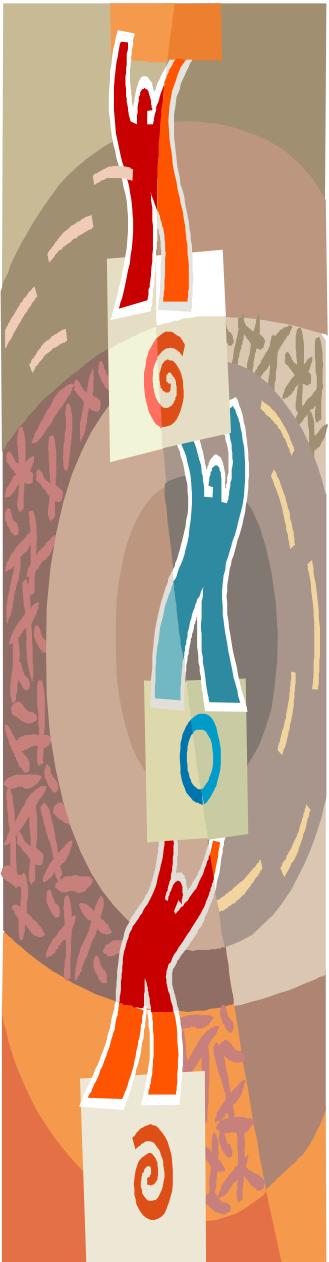


Welcome to the Myers-Briggs
Introductory
Personality Type Assessment and
Team Effectiveness Webinar

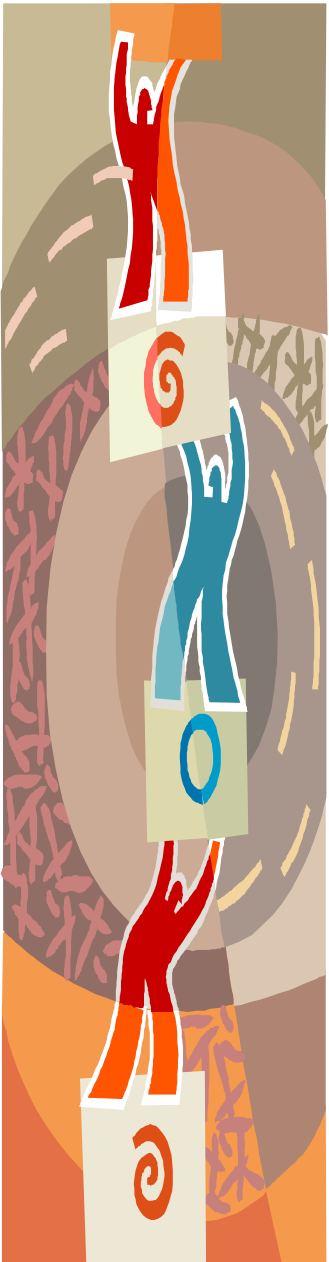




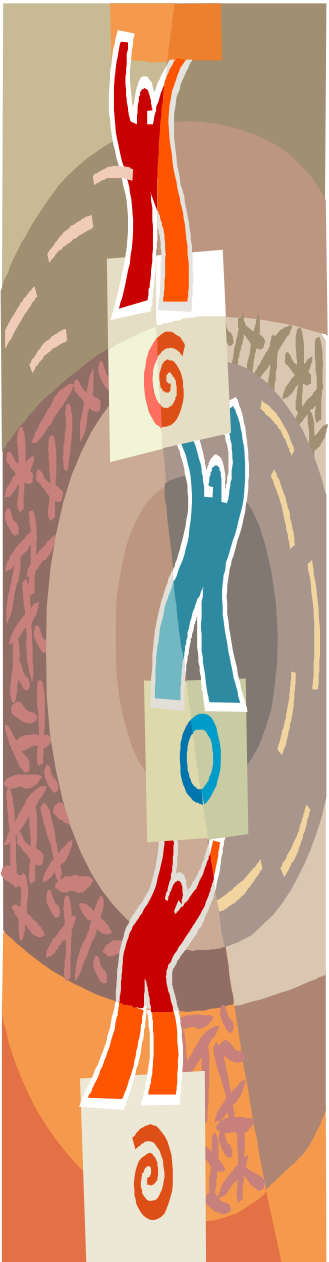
- The Myers-Briggs Type Indicator (MBTI) is Personality Assessment Tool



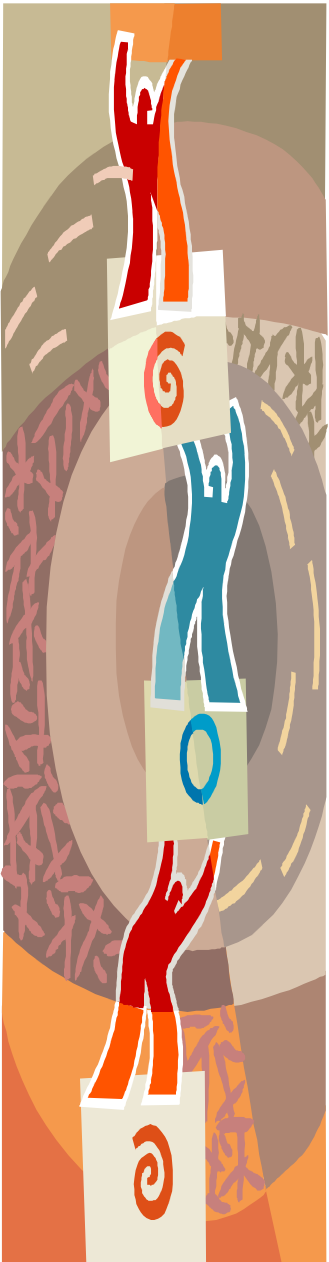
- Type indicates preferences and their associated behaviors – it does not indicate skills or abilities



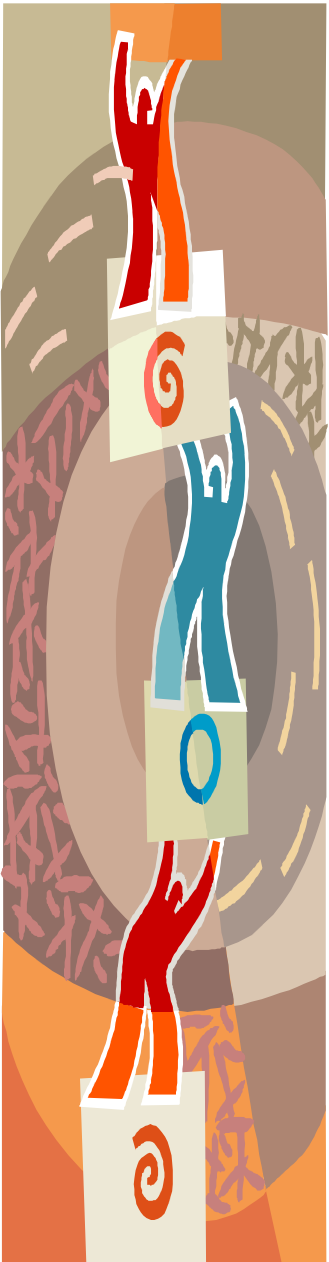
- Deals with everyday behavior of normal people



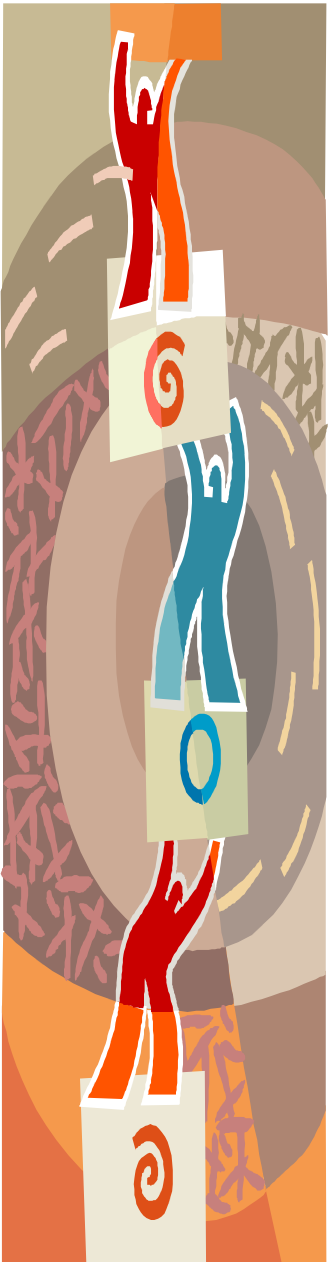
- Type is non-judgmental



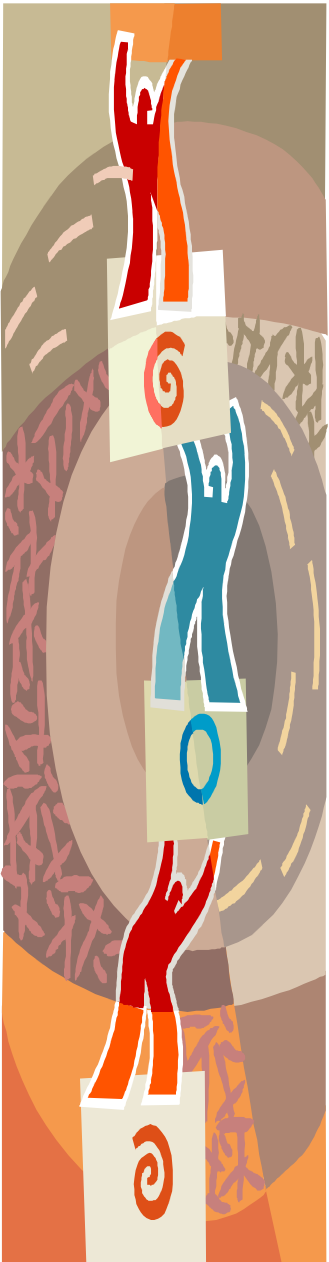
- Type is self-reporting



- The MBTI is the most widely used and researched Personality Assessment Tool in the world –
 - ❖ 3,500,000 Assessments are completed every year

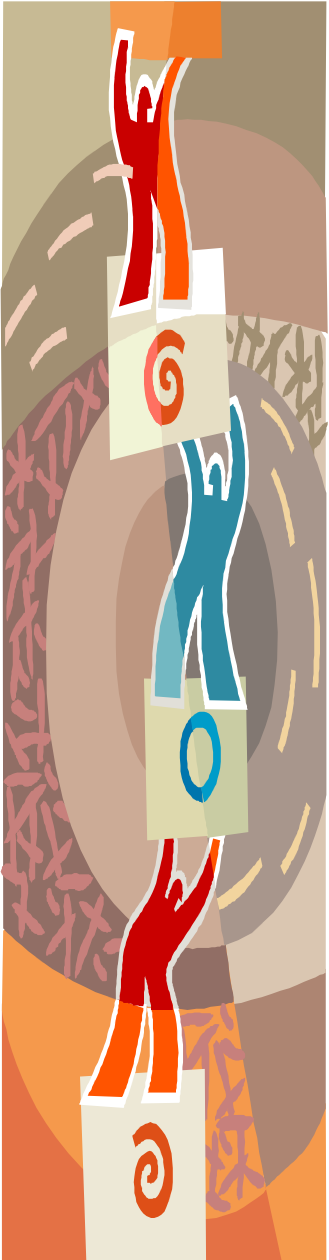


- Understanding of Myers-Briggs Personality Type is a powerful tool for individual development, interpersonal communications and relations, and especially for team development

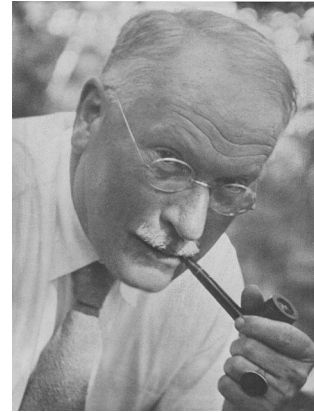
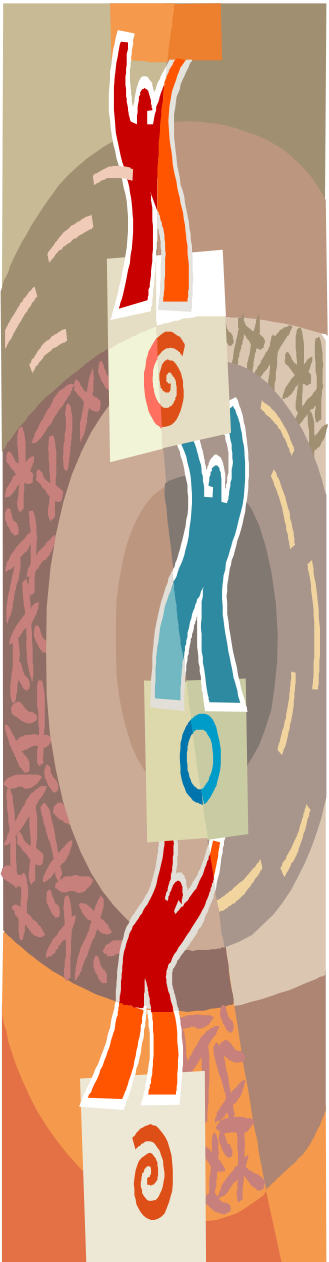


- Understanding Your Type can be:
 - ❖ Affirming!
 - ❖ Empowering!
 - ❖ Liberating!

Type is FUN!!!

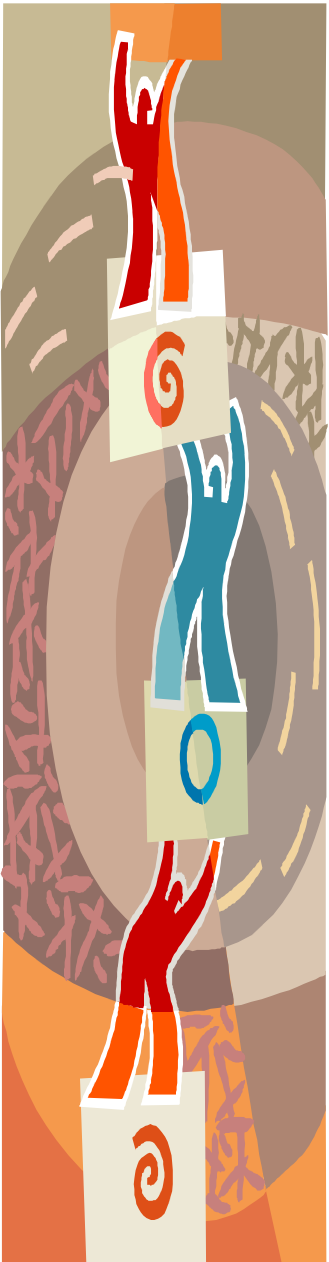


The Father of Modern Psychological Type Theory



**“Everything that irritates us about others
can lead us to an understanding of ourselves.”
Carl G. Jung**

The Mother-Daughter Team who developed the Myers-Briggs Type Indicator

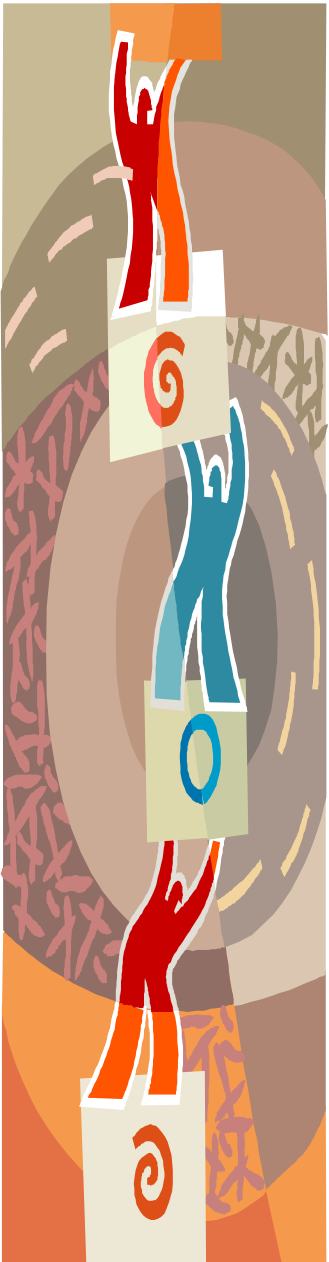


Katherine Cook Briggs



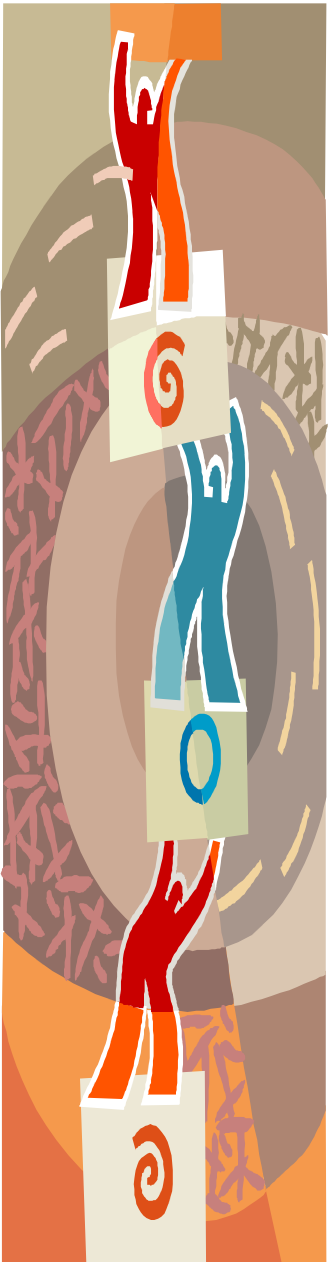
Isabel Briggs Myers

Exercise One – Preferences



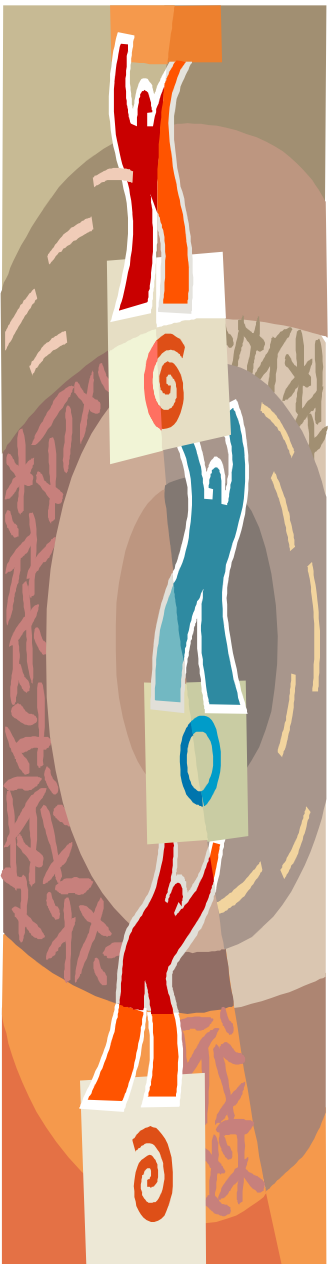
Preferred

Non-Preferred



- The MBTI is used to identify an individual's preferences for how she or he likes to receive and direct her or his energy, process information, make decisions, and orient her or his life.

Preference Dichotomies/Dimensions



Extraversion

ENERGY

Introversion

Sensing

INFORMATION

iNtuition

Thinking

DECISIONS

Feeling

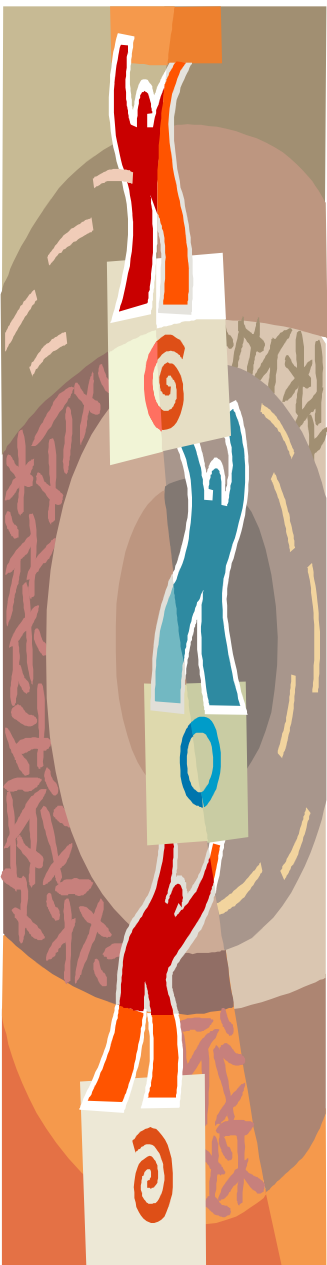
Judging

LIFESTYLE

Perceiving

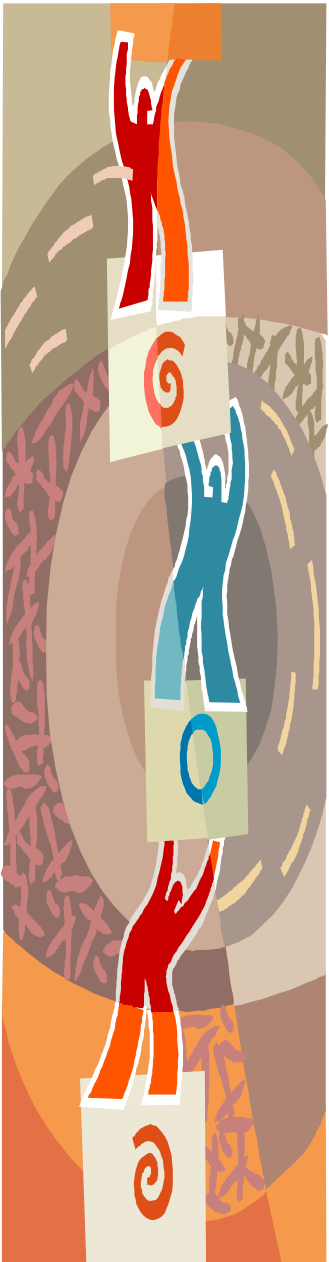
Exercise

Best-Fit and MBTI Type Validation



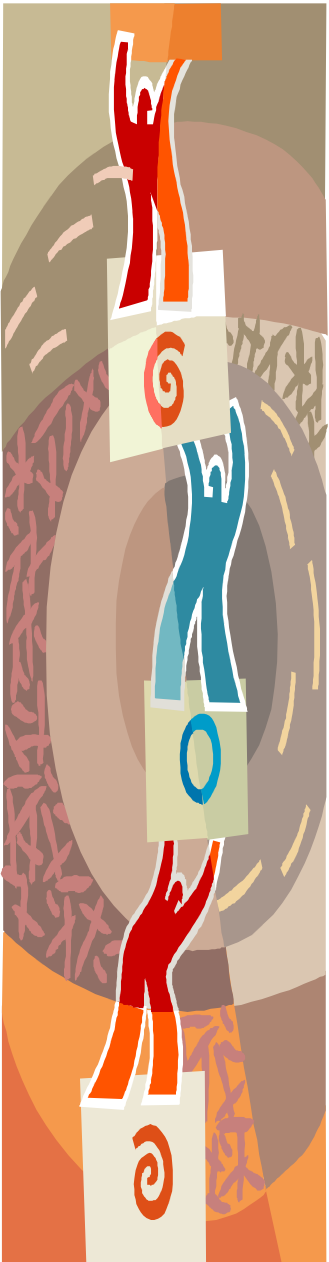
Extraversion		Introversion
Sensing		iNtuition
Thinking		Feeling
Judging		Perceiving
	Very Clear Clear Moderate Slight	Slight Moderate Clear Very Clear

	E or I	S or N	T or F	J or P
Self-Assessment Type:	_____	_____	_____	_____
M-B Indicator Type:	_____	_____	_____	_____
Best Fit Type:	_____	_____	_____	_____



- Each one of these four dimensions or processes is represented by a pair of preferences, and identified by those words or initials to form a four letter type, creating sixteen distinctive types in total.

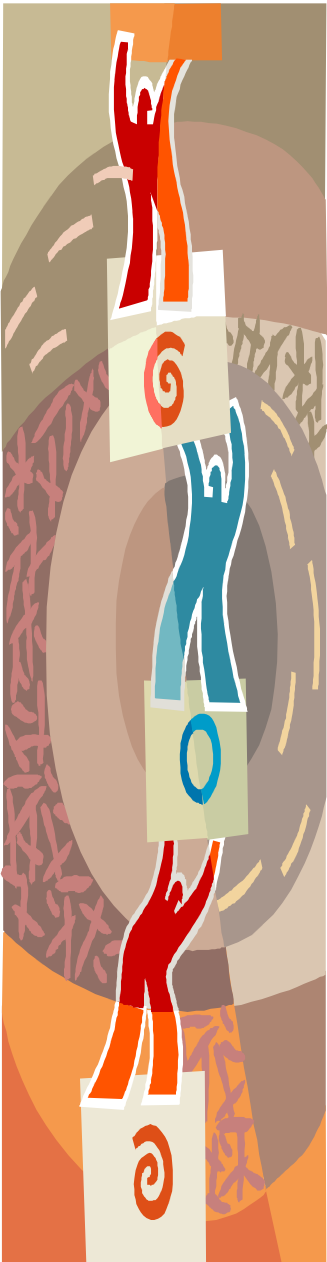
Myers-Briggs Type Table



ISTJ	ISFJ	INFJ	INTJ
ISTP	ISFP	INFP	INTP
ESTP	ESFP	ENFP	ENTP
ESTJ	ESFJ	ENFJ	ENTJ

The Energy Dimension

Extraversion-Introversion



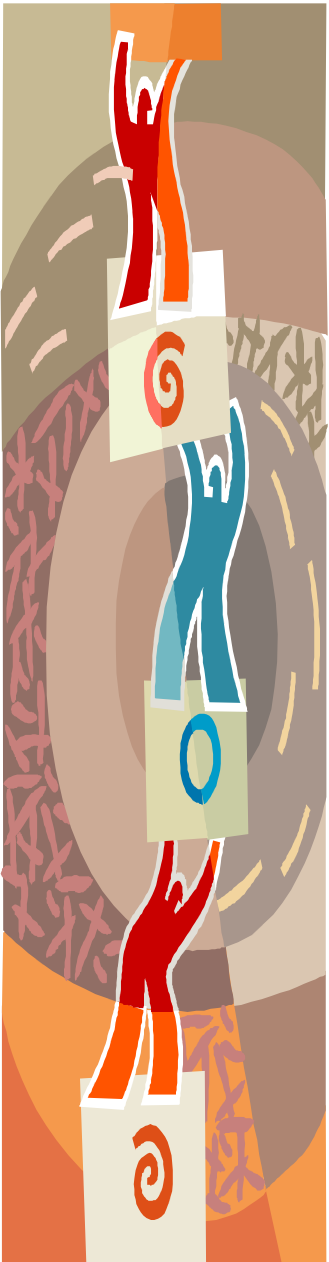
Directing and Receiving *Energy*

EXTRAVERSION

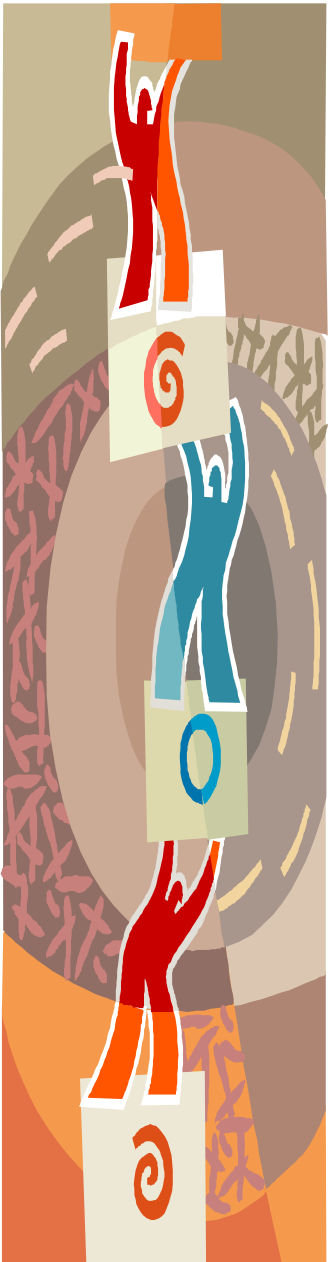
Being energized through contact with other people or through engaging in activities and external stimulation

INTROVERSION

Being energized through ideas, quiet times, or solitude



Exercise Two – Best-Fit and MBTI Type Validation for the Energy Dimension

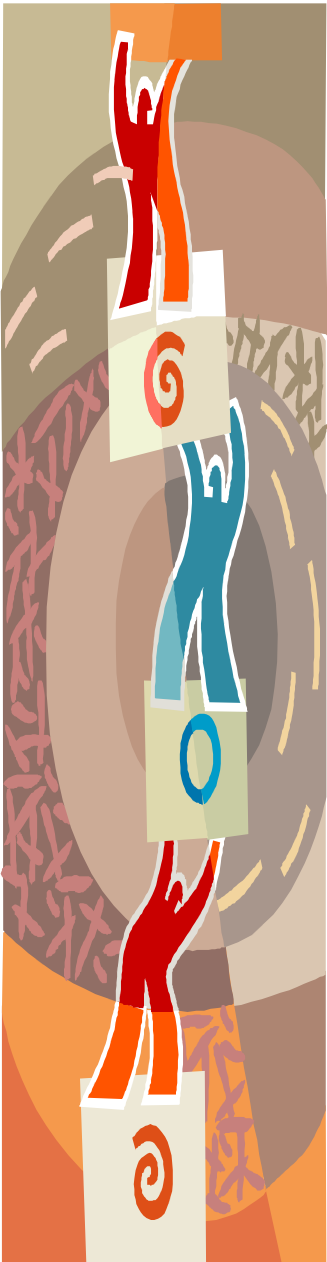


Extraversion	Introversion
Sensing	iNtuition
Thinking	Feeling
Judging	Perceiving
Very Clear Clear Moderate Slight	Slight Moderate Clear Very Clear

	E or I	S or N	T or F	J or P
Self-Assessment Type:	_____	_____	_____	_____
M-B Indicator Type:	_____	_____	_____	_____
Best Fit Type:	_____	_____	_____	_____

The Information Dimension

Sensing-Intuition



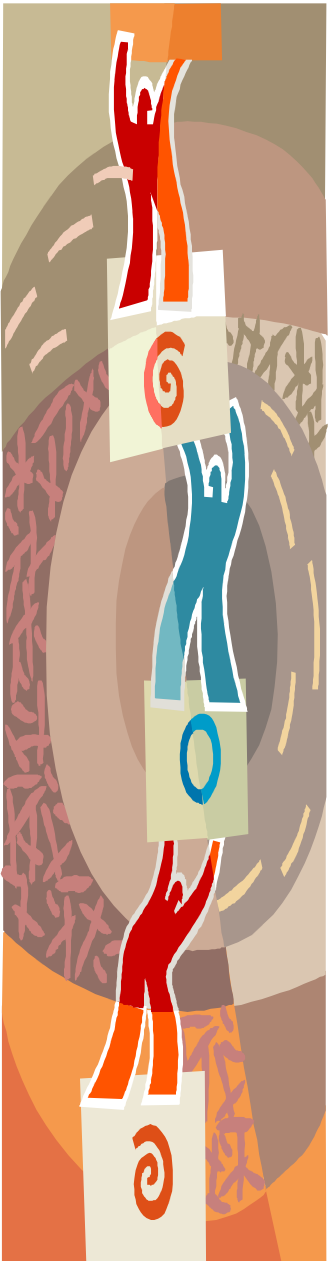
I'll need to see more data.



This looks like a great opportunity.



Gathering and Processing Information



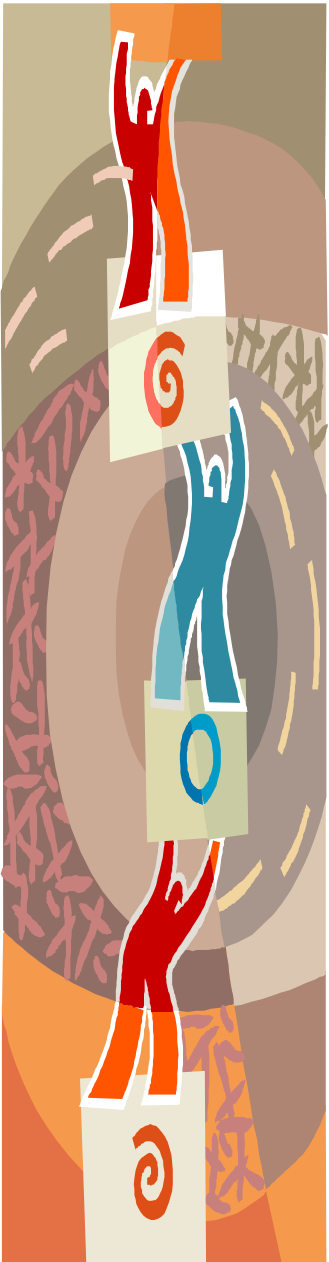
SENSING

Paying attention to what you perceive through the five senses: seeing, hearing, touching, smelling, and tasting

INTUITION

Paying attention to what might be described as the sixth sense—the unseen world of meanings, inferences, hunches, insights, and connections

Exercise Three – Best-Fit and MBTI Type Validation for the Information Dimension

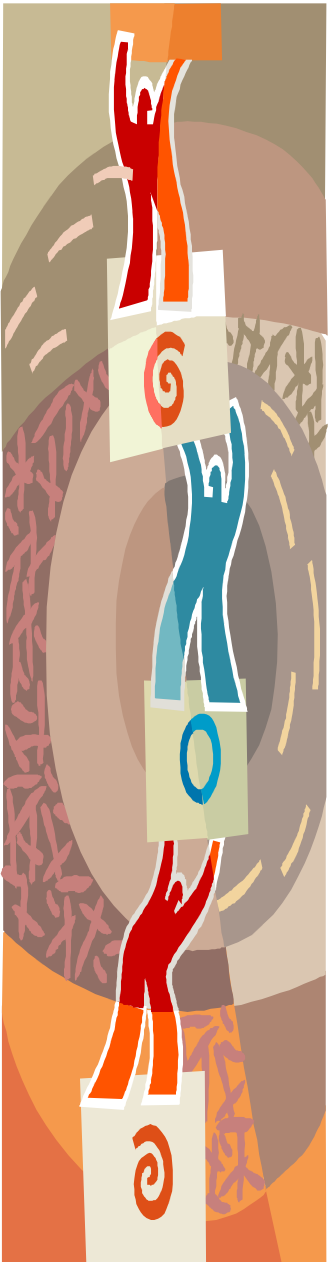


Extraversion	Introversion
Sensing	iNtuition
Thinking	Feeling
Judging	Perceiving
Very Clear Clear Moderate Slight	Slight Moderate Clear Very Clear

	E or I	S or N	T or F	J or P
Self-Assessment Type:	_____	_____	_____	_____
M-B Indicator Type:	_____	_____	_____	_____
Best Fit Type:	_____	_____	_____	_____

The Decision Dimension

Thinking-Feeling



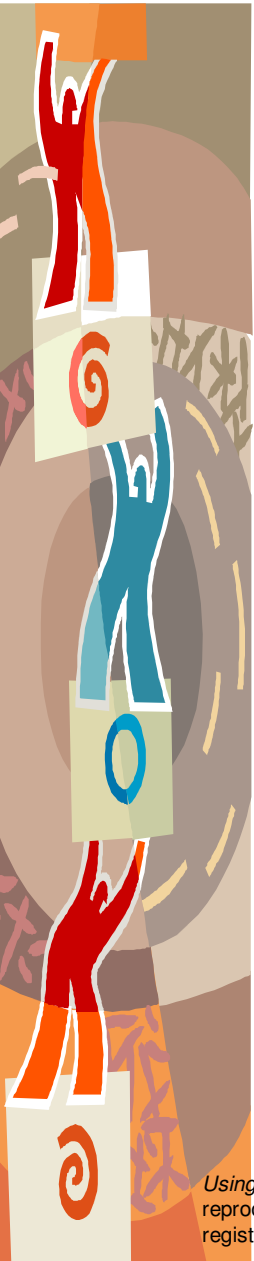
Making Decisions

THINKING

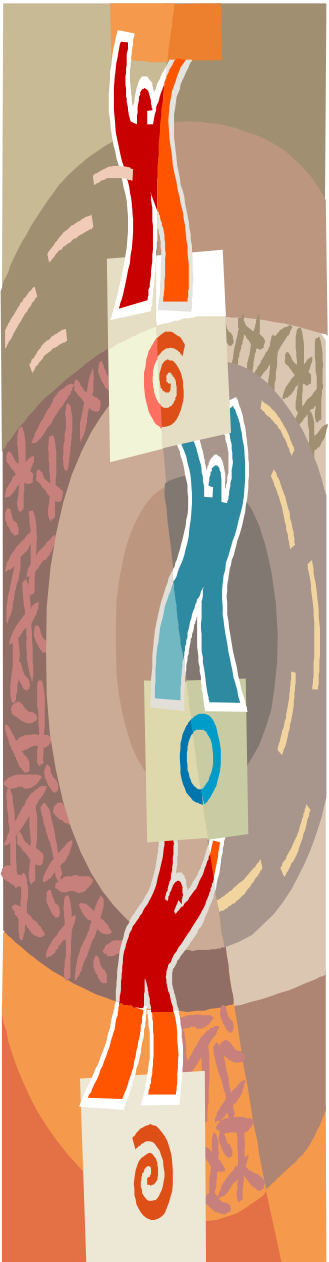
Making decisions based on impartial criteria—cause-effect reasoning, constant principles or truths, and logic

FEELING

Making decisions based on values-based, people-centered criteria, seeking harmony



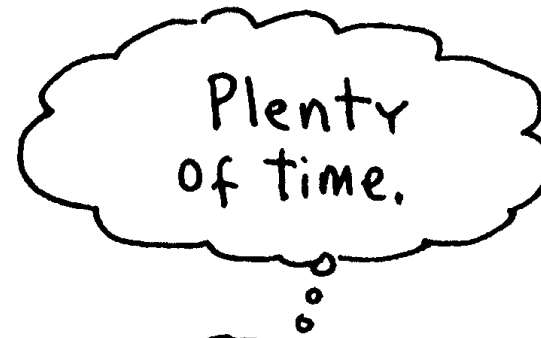
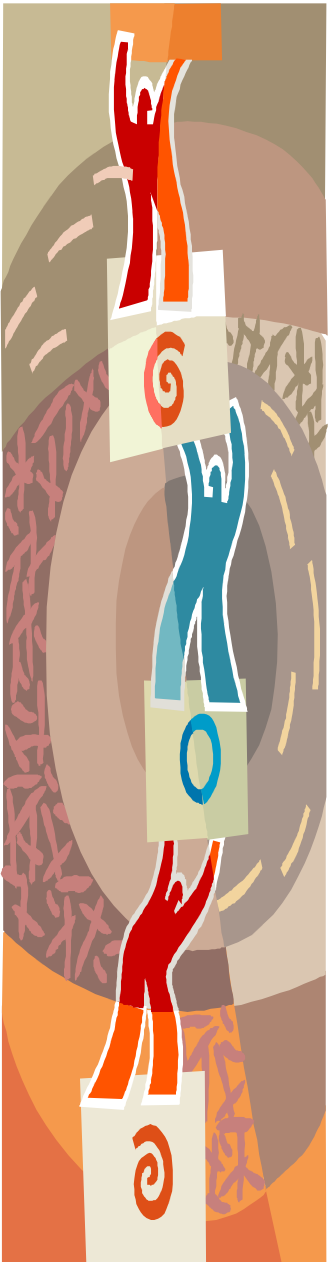
Exercise Four – Best-Fit and MBTI Type Validation for the Decision Making Dimension



Extraversion		Introversion
Sensing		iNtuition
Thinking		Feeling
Judging	<div style="display: flex; justify-content: space-between; width: 100%;"> Very Clear Clear Moderate Slight </div>	Perceiving
	<div style="display: flex; justify-content: space-between; width: 100%;"> Slight Moderate Clear Very Clear </div>	

	E or I	S or N	T or F	J or P
Self-Assessment Type:	_____	_____	_____	_____
M-B Indicator Type:	_____	_____	_____	_____
Best Fit Type:	_____	_____	_____	_____

The Life Dimension Judging-Perceiving



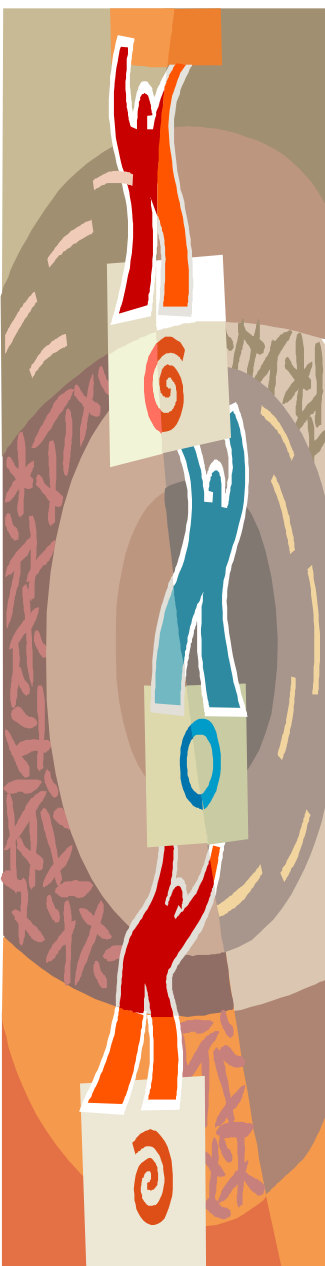
Approach to Life (Orientation)

JUDGING

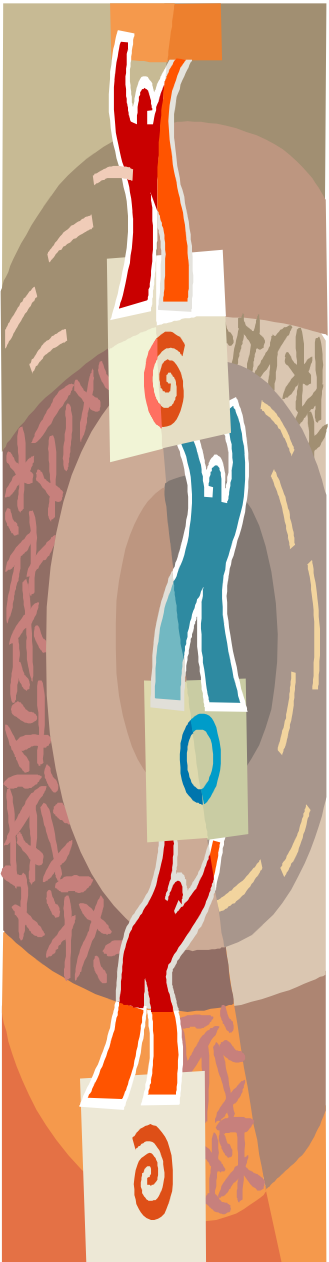
Want to live an ordered life, with goals and structure, making decisions so you can move on

PERCEIVING

Want to live a spontaneous life with flexibility, staying open to new information and possibilities



Exercise Five – Best-Fit and MBTI Type Validation for the Life Orientation Dimension



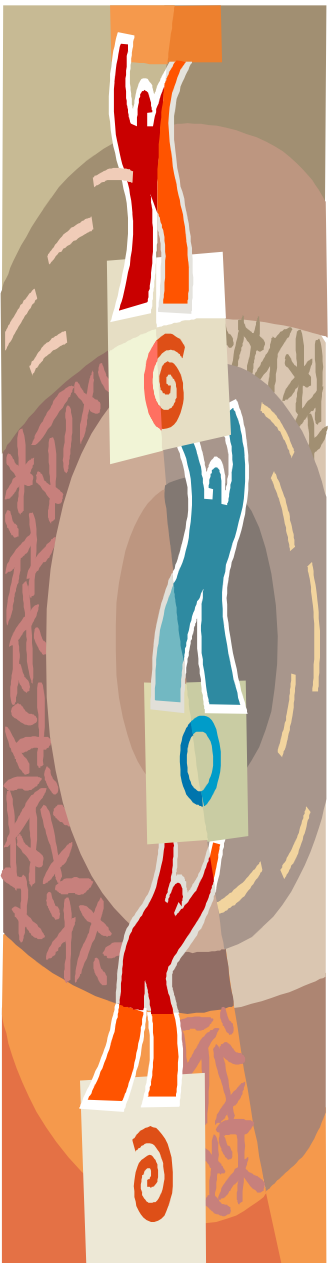
Extraversion		Introversion
Sensing		iNtuition
Thinking		Feeling
Judging	<div style="display: flex; justify-content: space-between; width: 100%;"> Very Clear Clear Moderate Slight </div>	Perceiving
	<div style="display: flex; justify-content: space-between; width: 100%;"> Slight Moderate Clear Very Clear </div>	

	E or I	S or N	T or F	J or P
Self-Assessment Type:	_____	_____	_____	_____
M-B Indicator Type:	_____	_____	_____	_____
Best Fit Type:	_____	_____	_____	_____

Type Distribution of the U.S. National Representative Sample

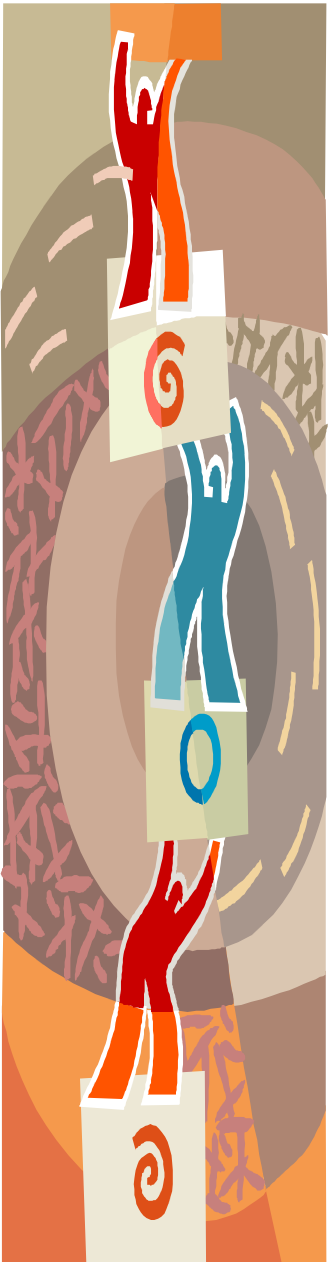
ISTJ 11.6%	ISFJ 13.8%	INFJ 1.5%	INTJ 2.1%
ISTP 5.4%	ISFP 8.8%	INFP 4.4%	INTP 3.3%
ESTP 4.3%	ESFP 8.5%	ENFP 8.1%	ENTP 3.2%
ESTJ 8.7%	ESFJ 12.3%	ENFJ 2.5%	ENTJ 1.8%

E = 49.3%	I = 50.7%
S = 73.3%	N = 26.7%
T = 40.2%	F = 59.8%
J = 54.1%	P = 45.9%

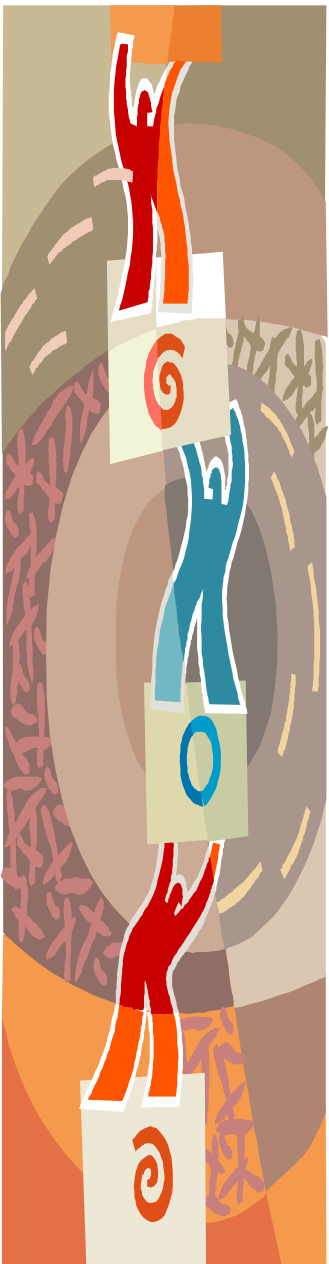


Key Type Point to Remember!

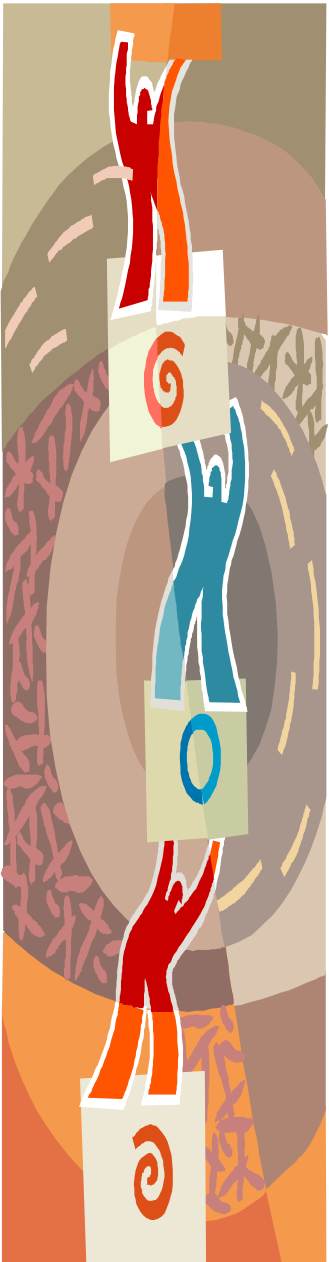
- Type is an explanation of behavior, not an excuse for behavior!



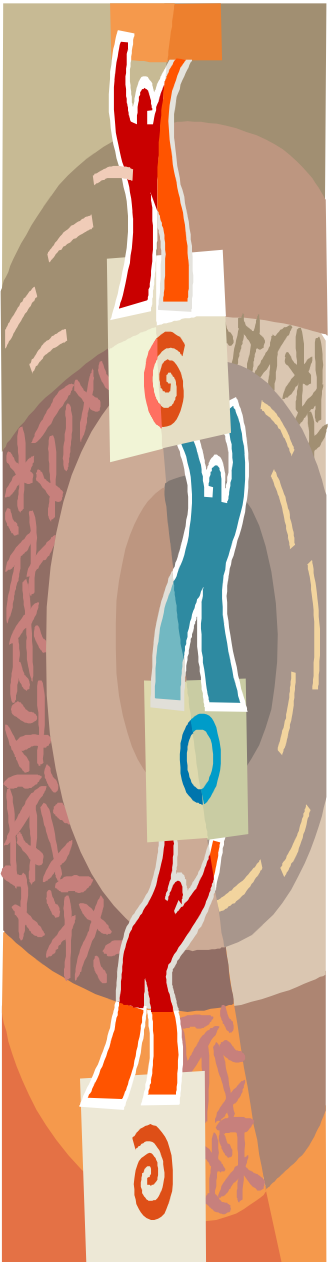
Interpersonal and Team Applications of the Myers-Briggs Personality Type Methodology



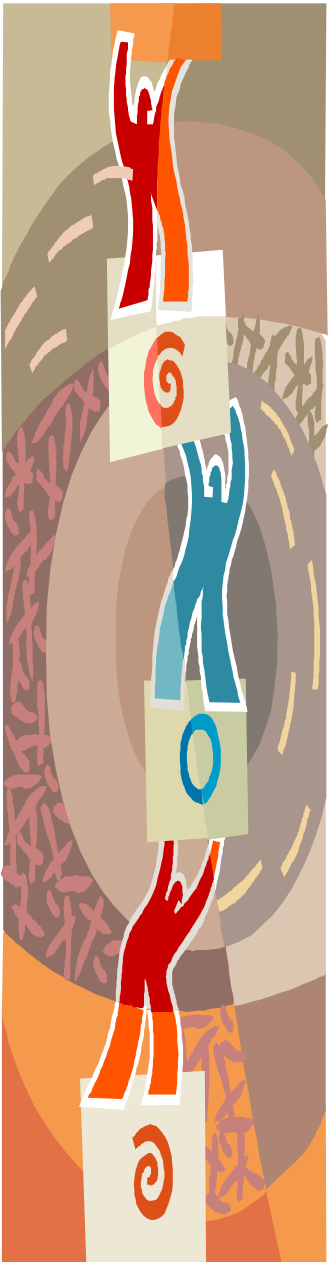
- Communication
- Proactive Conflict Aversion and Resolution (if necessary)
- Collaboration & Creativity
- Problem Solving/Decision Making
- Managing
- Coaching/Leader Development
- Selling



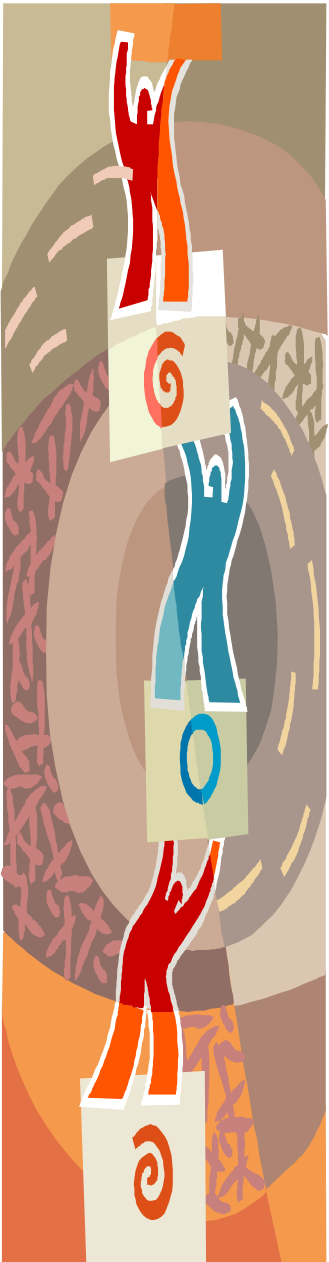
- Communication



- Proactive Conflict Aversion and Resolution (if necessary)



- Collaboration & Creativity



- Managing Employees

Source and Reference Material

Much of the material used to create this workshop was based upon the following publications:

Using the Myers-Briggs Type Indicator in Organizations (3rd Edition), Sandra Krebs Hirsch and Jane Kise, 2001 (Consulting Psychologists Press: Palo Alto, CA)

Introduction to Type and Teams, Sandra Krebs Hirsch, 1992 (Consulting Psychologists Press: Palo Alto, CA)

Introduction to Type in Organizations (3rd Edition), Sandra Krebs Hirsch and Jean M. Kummerow, 1992 (Consulting Psychologists Press: Palo Alto, CA)

MBTI Manual (3rd Edition), Isabel Briggs Myers, Mary H. MacCauley, Naomi L. Quenk, Allen L Hammer, 1998 (Consulting Psychologists Press: Palo Alto, CA)

Gifts Differing, Isabel Briggs Myers, 1980 (Davies-Black Publishing: Palo Alto, CA)

Please Understand Me (4th Edition), David Keirsey and Marilyn Bates, 1984 (Prometheus Nemesis Book Company: Del Mar, CA)

related urls:

<http://www.capt.org/>

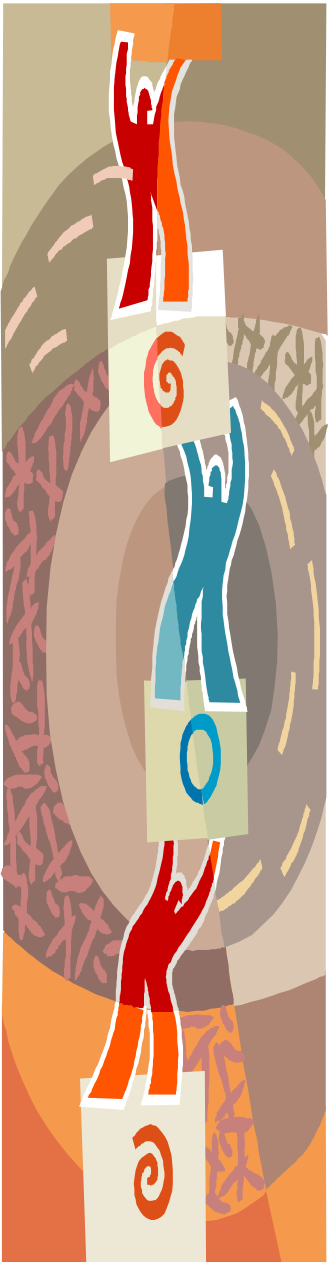
<http://www.apinternationl.org/>

<http://www.cpp-db.com/>

<http://www.keirsey.com/>

<http://www.knowyourtype.com/faq.html>

<http://www.personalitypage.com/four-prefs.html>



Acknowledgements

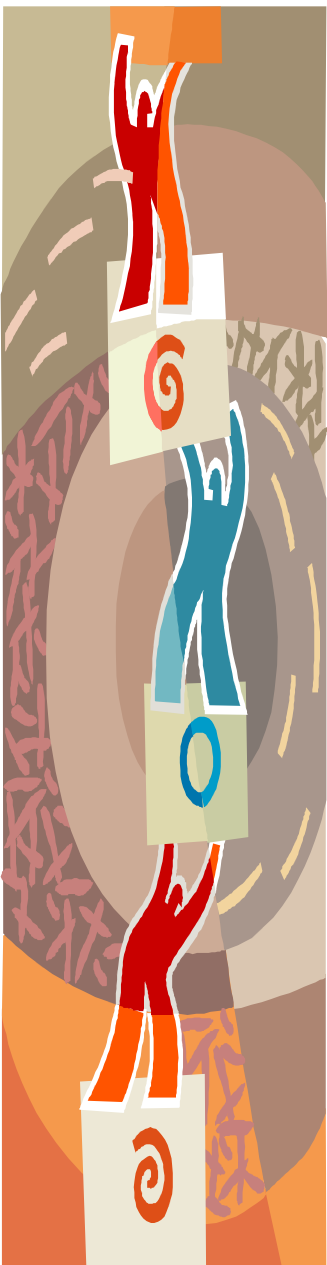
This Myers-Briggs workshop was created and presented by Jerry Pico, Principal-Consultant of People & Knowledge Works Consulting, expressly for the use of the People-OnTheGo Webinar on November 6, 2008. Please do not reproduce or distribute any of this material without first obtaining his permission. Please contact Jerry if you have any questions regarding the webinar or to learn more your Myers-Briggs Preferences and Type, or to use it to enhance your team's performance.

to contact Jerry and learn more...

v 415.425.7426

e jerry@pkwconsulting.com

i <http://www.pkwconsulting.com/>



QUESTIONS????

